

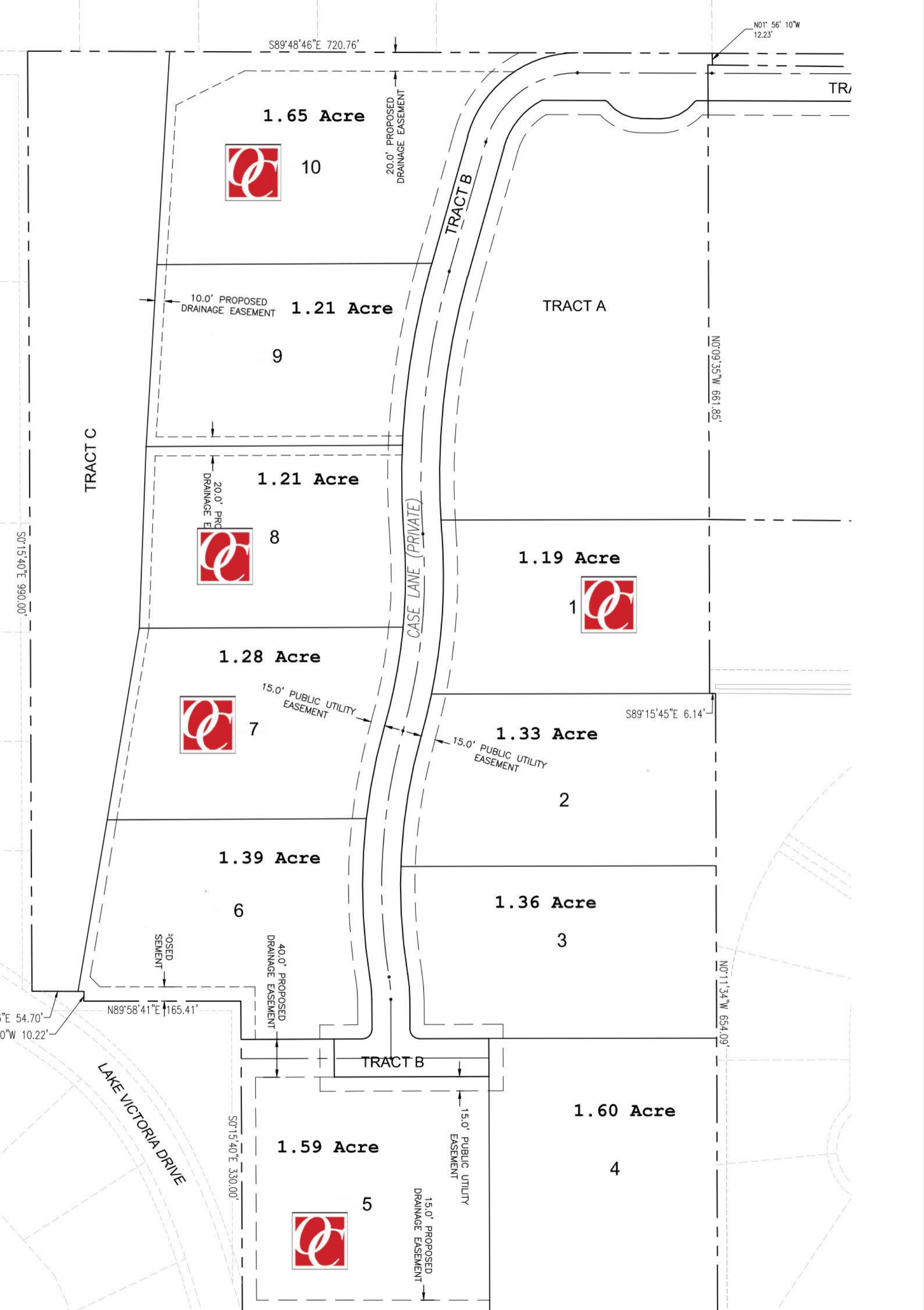
*Introducing*

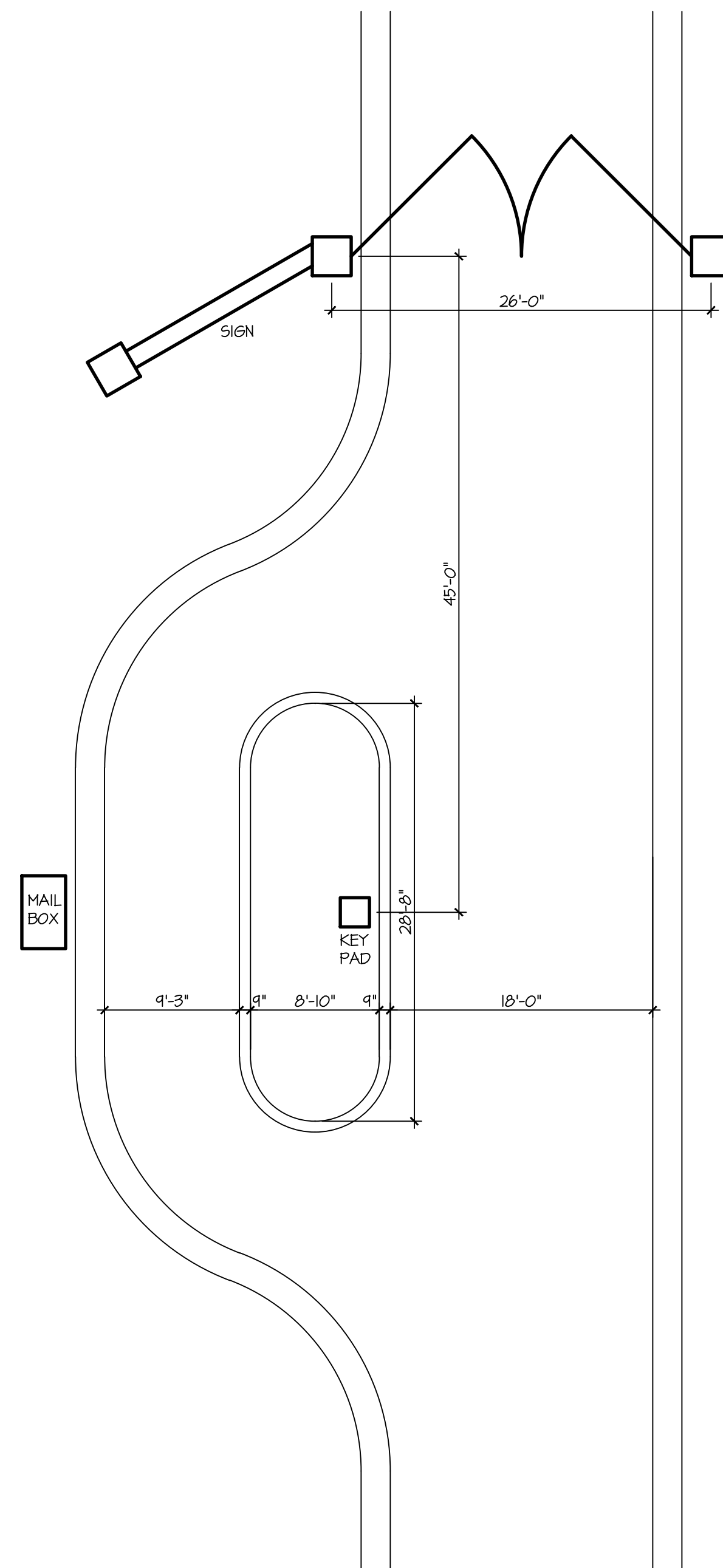
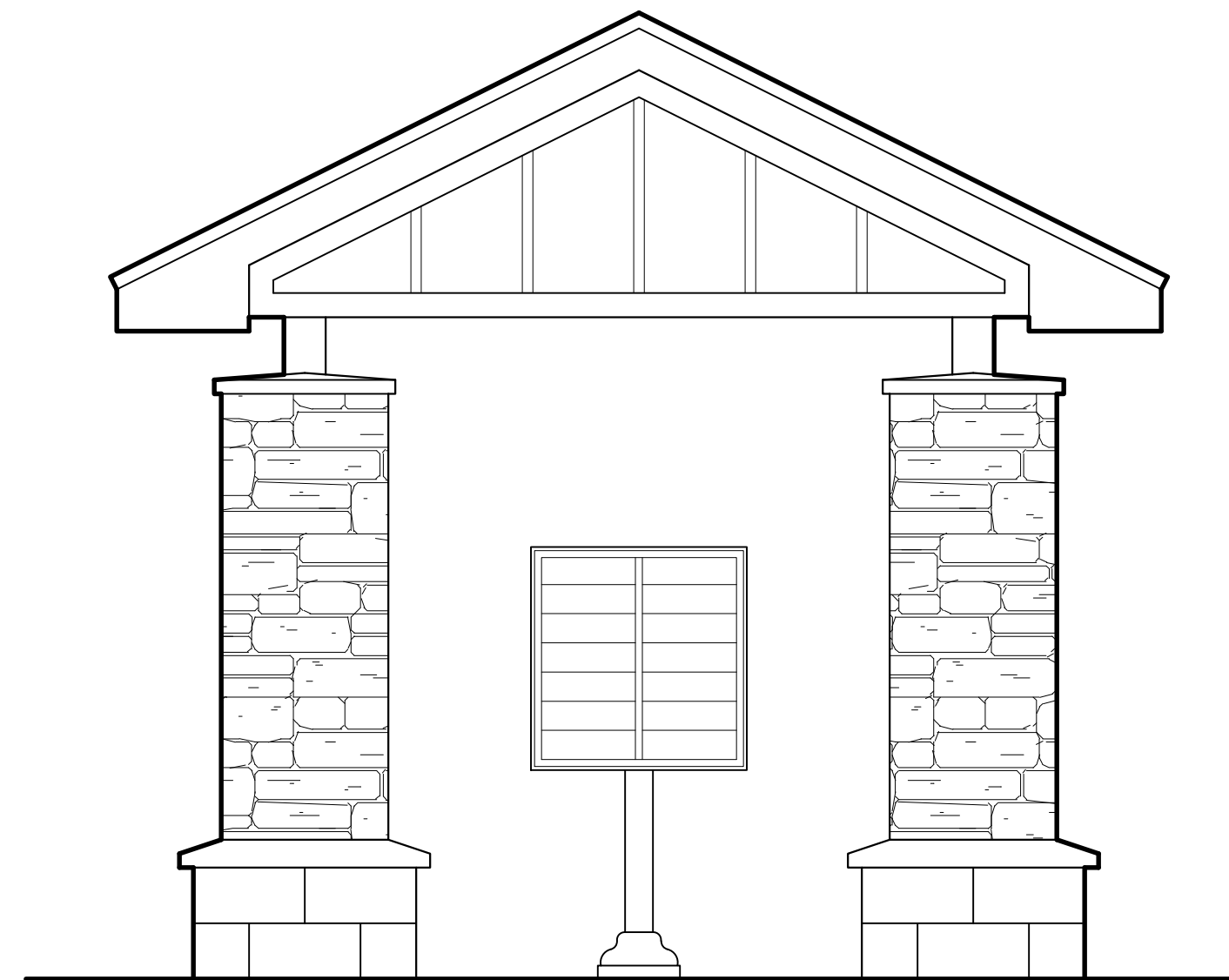
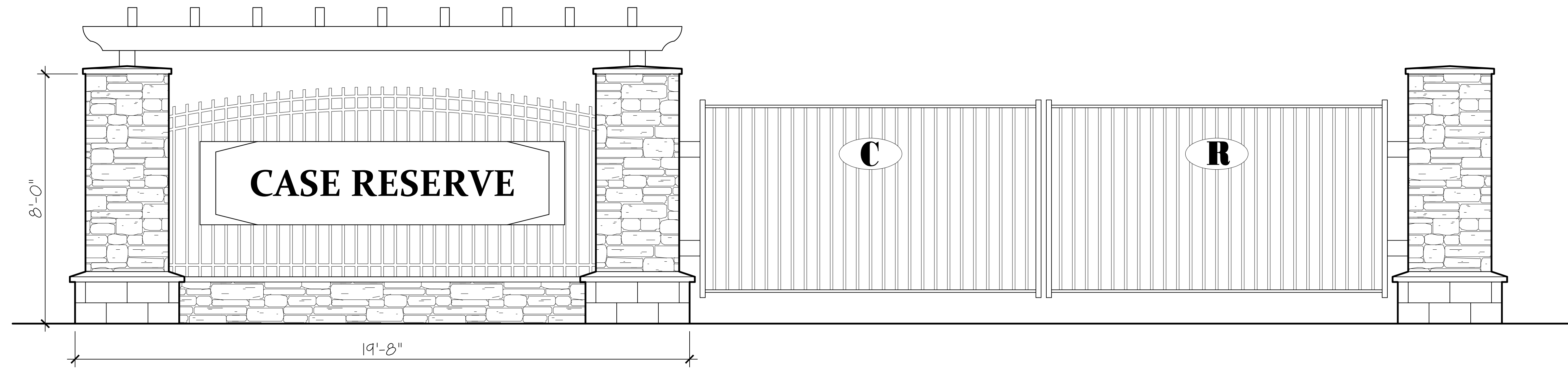
# CASE RESERVE

At Scott Lake  
Gated 10 Lot Private Community

**1.2 to 1.7 Acre  
Deed Restricted Lots**

**Located in South Lakeland  
Ready for construction  
of New Homes August 2019**





CASE RESERVE ENTRANCE  
1/8" = 1'-0"



CASE RESERVE ENTRY

SCHEMATIC DESIGN	DATE
DESIGN DEVELOPMENT	DATE
CONSTRUCTION DOCUMENTS	DATE 12-11-2009
REVISION 1	DATE
REVISION 2	DATE
REVISION 3	DATE

JOB NO.  
DRAWN BY.  
DATE:

SHEET NO.  
**2**